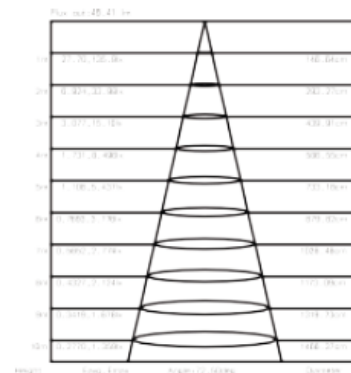
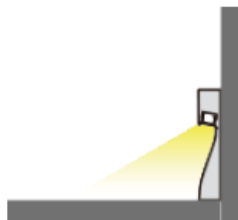
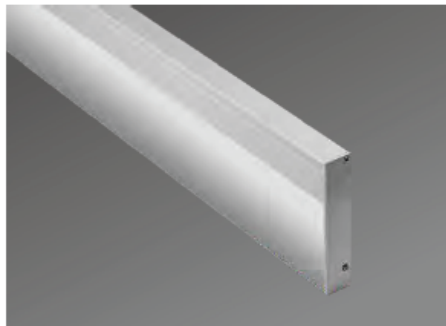


# LL-1680



## Application:

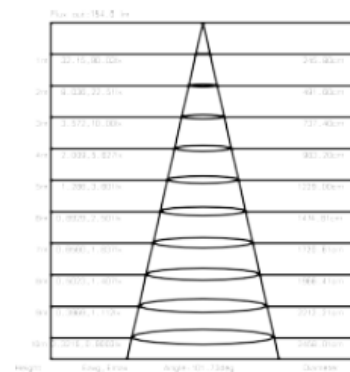
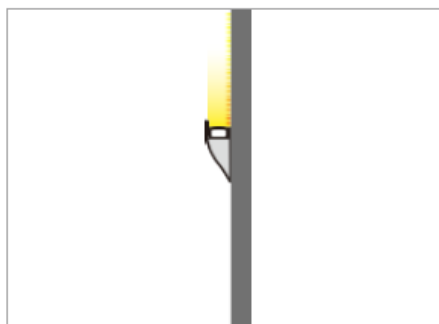
Used on the baseboard / flooring angular line for decorative indirect lighting.

# LL-1844

## SW-1680-1015-24D

CCT: 2300K /3000K /4000K /6000K

Lumen	Beam Angel	IP Grade	Input Voltage	CRI	Power	Dimension
223LM@3000K@Ra80	117	IP40	DC24V	RA80 / RA90	7.6W	L 1015*W16*H80mm



## Application:

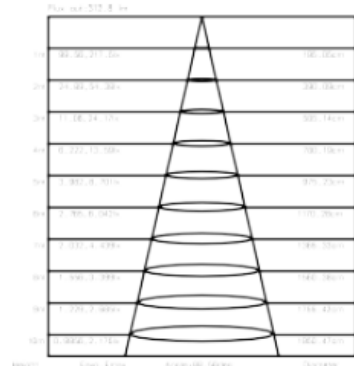
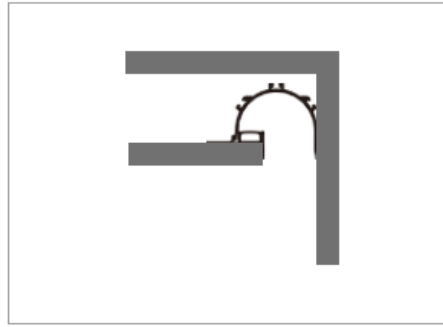
6 TFE PO UIF XBMMGPSEFDPSBUWF JOEJSDUMJHJUCH,  
DVTUPNJ[FE MFOHUIJT BMBJBCMF

## SWL-1844-1015-24D

CCT: 2300K /3000K /4000K /6000K

Lumen	Beam Angle	CRI*	Power	Input voltage	IP Grade	Dimension
232Lm@3000K@Ra80	104'	Ra80 /Ra90	3.8W	DC24V	IP40	L 1015*W18*H44mm

# LL-10168



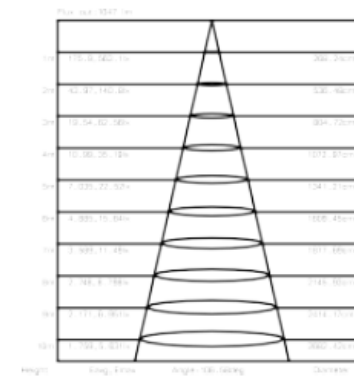
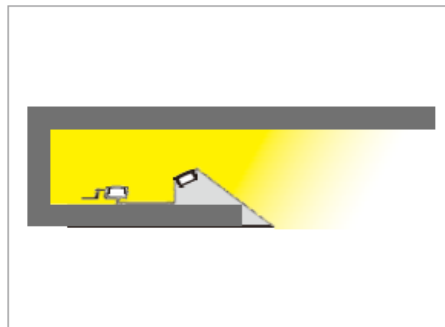
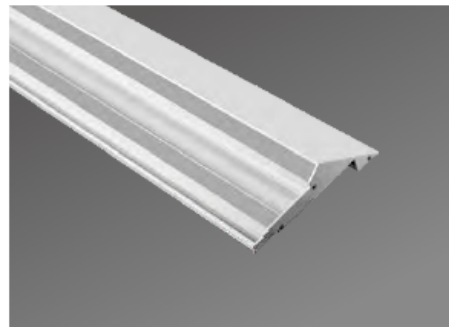
Application:  
Used on the wall for decorative lighting

## SWL-10168-1015-24D

CCT: 2300K /3000K /4000K /6000K

Lumen	Beam angle	CRI	Power	Input voltage	IP Grade	Dimension
565lm@3000K@Ra80	104°	Ra80 /Ra90	20W	DC24V	IP40	L1015*W101*H68mm

# LL-14346



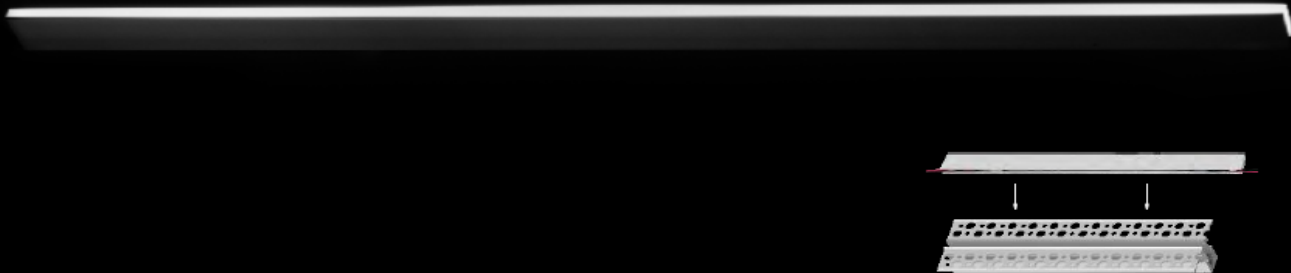
\*QQMJDBUJPO:  
6 TFE PO UIF DEJMOH GPSEFDPSBUUMF JOEJSDU  
MHLUOH, DVTUPNUIJFE MFOHUIJT BMBMBDF

## SWL-14346-1015-24D

CCT: 2300K /3000K /4000K /6000K

Lumen	Beam angle	CRI	Power	Input voltage	IP Grade	Dimension
1959lm@3000K@Ra80	108°	Ra80 /Ra90	28.8W	DC24V	IP40	L1015*W143*H46mm

# LL-1906



Ultra-thin 3mm light emitting surface and the width of housing is only 6mm.  
 Soft Light, zero glare  
 Fine texture, fashion and classic.  
 Could reach seamless connection with no darkness. Widely used in the high quality decoration lighting, such as Arts building, museum, furniture and so on.

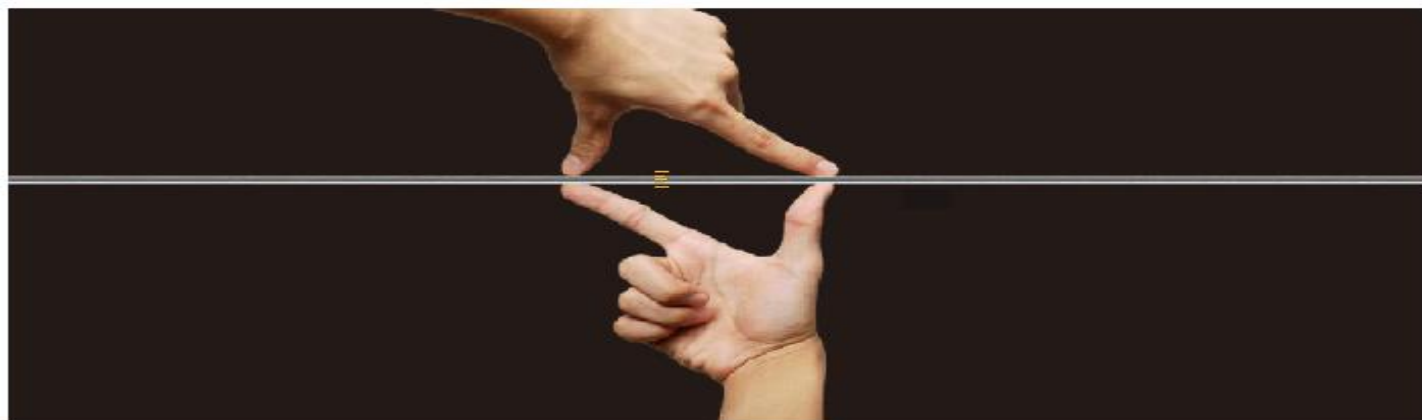


## SWL-1906-1005-24D

CCT: 2300K /3000K /4000K /6000K

Lumen	Beam angle	CRI	Power	Input voltage	IP Grade	Dimension
@3000K@Ra80	116°	Ra80 /Ra90	12W	DC24V	IP40	L1005*W6*H19mm

# LL-3006



Ultra-thin 3mm light emitting surface and the width of housing is only 6mm. Fine texture, fashion and classic. Could reach seamless connection with no darkness. Widely used in the high quality decoration lighting, such as Arts building, museum, furniture and so on.



## SWL-3006-1005-24D

CCT: 2300K /3000K /4000K /6000K

Lumen	Beam angle	CRI	Power	Input voltage	IP Grade	Dimension
2351lm@3000K@Ra80	100°	Ra80 /Ra90	13.8W	DC24V	IP40	L1005*W6*H30mm